

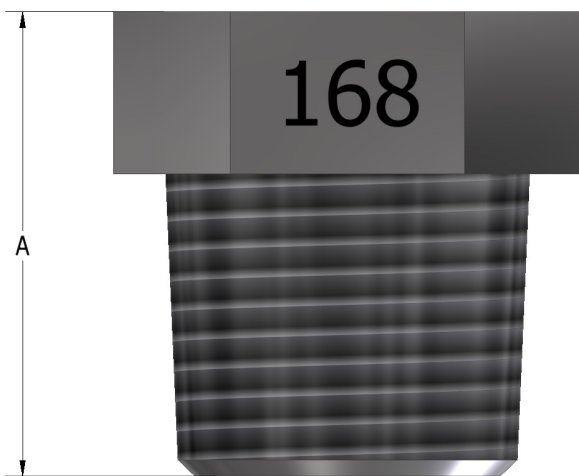


Proudly Distributed By

TRIDENT AUSTRALIA
FLUID SYSTEMS & COMPONENTS

OPERATION

The Ruelco Fuse Plug is a heat sensitive device designed to vent control pressure at a predetermined temperature. Ruelco fuse plugs are manufactured using a process that assures a leak free operation, and all fuse plugs are 100% tested. The sensing temperature of the fusible material is marked clearly on each fuse plug to assure proper identification.



FEATURES

- 316 stainless steel construction (models to N.A.C.E. MR0175 available)
- Leak free seal
- Large Cv factors produce large flow rates
- Small compact design
- Exotic materials available
- Wide range of available melting temperatures

HIGH FLOW FUSE PLUG

DIMENSIONS / SPECIFICATIONS

SIZE	A	ORIFICE DIAMETER	MAXIMUM PRESSURE	INSTALL TORQUE
1/8" NPT	.550" (14 mm)	.187" (4.75 mm)	200 PSI (13.8 BAR)	196 IN LBS
1/4" NPT	.770" (19.6 mm)	.281" (7.14 mm)	200 PSI (13.8 BAR)	256 IN LBS
3/8" NPT	.860" (21.8 mm)	.375" (9.52 mm)	200 PSI (13.8 BAR)	358 IN LBS
1/2" NPT	1.10" (27.9 mm)	.438" (11.13 mm)	200 PSI (13.8 BAR)	682 IN LBS

ORDERING CODE

2102 - XX XXX

1/8" MNPT	----	12
1/4" MNPT	----	25
3/8" MNPT	----	37
1/2" MNPT	----	50

158	----	158° F Temp.
168	----	168° F Temp.
183	----	183° F Temp.
210	----	210° F Temp.
255	----	255° F Temp.
283	----	283° F Temp.
361	----	361° F Temp.

PHONE: 504-340-0055
 FAX: 504-340-0056
 EMAIL: SALES@RUELCO.COM

1209 DISTRIBUTORS ROW
 NEW ORLEANS, LA 70123



Proudly Distributed By

TRIDENT AUSTRALIA
FLUID SYSTEMS & COMPONENTS

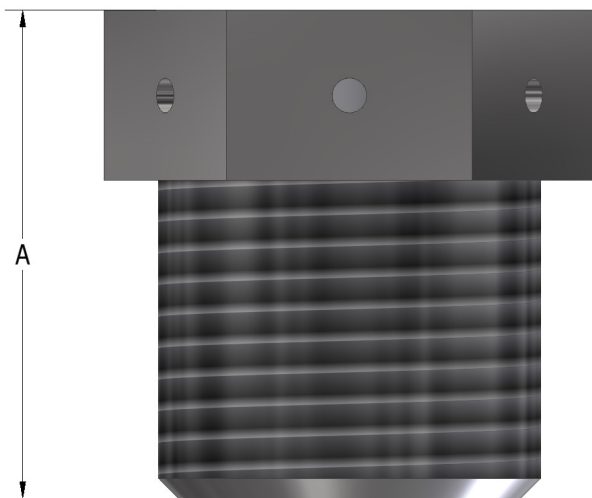
OPERATION

The Ruelco Fuse Plug is a heat sensitive device designed to vent control pressure at a predetermined temperature. Ruelco fuse plugs are manufactured using a process that assures a leak free operation, and all fuse plugs are 100% tested. The sensing temperature of the fusible material is marked clearly on each fuse plug to assure proper identification.

FEATURES

- 316 stainless steel construction (models to N.A.C.E. MR0175 available)
- Leak free seal
- Large Cv factors produce large flow rates
- Small compact design
- Exotic materials available
- Wide range of available melting temperatures

FUSE PLUG



DIMENSIONS / SPECIFICATIONS

SIZE	A	ORIFICE DIAMETER	MAXIMUM PRESSURE	INSTALL TORQUE
1/8" NPT	.550" (14 mm)	.186" (4.72 mm)	500 PSI (34.5 BAR)	196 IN LBS
1/4" NPT	.770" (19.6 mm)	.186" (4.72 mm)	500 PSI (34.5 BAR)	256 IN LBS
3/8" NPT	.860" (21.8 mm)	.186" (4.72 mm)	500 PSI (34.5 BAR)	358 IN LBS
1/2" NPT	1.10" (27.9 mm)	.186" (4.72 mm)	500 PSI (34.5 BAR)	682 IN LBS

ORDERING

2101 - XX XXX

1/8" MNPT	----	12
1/4" MNPT	----	25
3/8" MNPT	----	37
1/2" MNPT	----	50

158	----	158° F Temp.
168	----	168° F Temp.
183	----	183° F Temp.
210	----	210° F Temp.
255	----	255° F Temp.
283	----	283° F Temp.
361	----	361° F Temp.

PHONE: 504-340-0055
 FAX: 504-340-0056
 EMAIL: SALES@RUELCO.COM

1209 DISTRIBUTORS ROW
 NEW ORLEANS, LA 70123



Proudly Distributed By

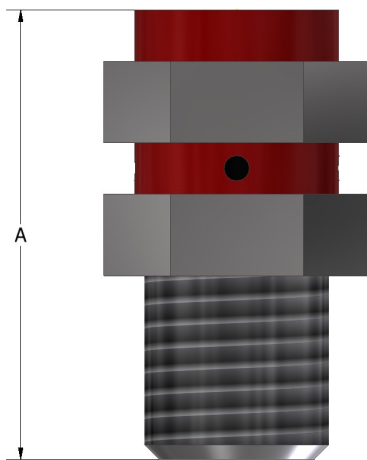
TRIDENT AUSTRALIA
FLUID SYSTEMS & COMPONENTS

OPERATION

The Ruelco Fuse Plug is a heat sensitive device designed to vent control pressure at a predetermined temperature of 450 F. Ruelco fuse plugs are manufactured using a process that assures a leak free operation, and all fuse plugs are 100% tested. The sensing temperature of the fusible material is marked clearly on each fuse plug to assure proper identification.

FEATURES

- 316 stainless steel construction (models to N.A.C.E. MR0175 available)
- Leak free seal
- Large Cv factors produce large flow rates
- Small compact design
- Exotic materials available



HIGH PRESSURE FUSE PLUG

DIMENSIONS / SPECIFICATIONS

SIZE	A	ORIFICE DIAMETER	MAXIMUM PRESSURE	INSTALL TORQUE
1/4" NPT	1.10" (27.9 mm)	.186" (4.72 mm)	6,000 PSI (414 BAR)	256 IN LBS
3/8" NPT	1.275" (32.4 mm)	.186" (4.72 mm)	6,000 PSI (414 BAR)	358 IN LBS
1/2" NPT	1.456" (36.9 mm)	.186" (4.72 mm)	6,000 PSI (414 BAR)	682 IN LBS

ORDERING CODE

2103 - XX 450

1/4" MNPT	---	25
3/8" MNPT	---	37
1/2" MNPT	---	50

PHONE: 504-340-0055
FAX: 504-340-0056
EMAIL: SALES@RUELCO.COM

1209 DISTRIBUTORS ROW
NEW ORLEANS, LA 70123